

easthorsley.info

Your village matters

SUMMER 2023

Coronation Princesses

**HORSLEY
BIG DAY OUT
& WELLFEST**

**SUNDAY 2 JULY
2pm - 7pm**

HORSLEY TOWERS

**SEE INSIDE FOR
DETAILS**

INSIDE THIS ISSUE

- Horsley Big Day Out & WellFest
- Annual Parish Meeting Report
- East Horsley Just Got Bigger
- Task Group Reports
- Potholes!
- New Faces
- Wisley Airfield – Twists & Turns
- Don't Lock Up Your Daughters
- New Website Launch

Chairman's Comments

The Local Elections of 4 May brought some changes to East Horsley Parish Council and to the team of Guildford Borough councillors representing the Clandon & Horsley Ward.

East Horsley Parish Councillors

All nine of our existing parish councillors stood again at the election, which was formally 'uncontested' since we were under our newly raised limit of twelve councillors. I should like to thank all my colleagues for their renewed commitment. I am also delighted to welcome on board a new parish councillor, Juliet Robinson, a resident of Norrels Drive (see pg 12).

Under our current rules, we are permitted to engage up to two more councillors through a process of co-option, something we hope to progress in the coming months.

Crowning glory

For the coronation of King Charles III and Queen Camilla on 6 May, the Parish Council displayed

another array of union flags across our village centres. We also set up golden decorations on the grass areas at Station Parade, Bishopsmead Parade, Effingham Junction and Wellington Meadow bearing the CR111 emblem. Many thanks to the volunteer team who worked so hard to create these splendid displays - more details on Page 7.

Robert Taylor
Chairman, East Horsley Parish Council
robert.taylor@easthorsleypc.org



R4GV scores a 'hat trick' in Clandon and Horsley

IN THE RECENT local elections to Guildford Borough Council, the voters of Clandon & Horsley Ward elected three representatives of Residents for Guildford & Villages (R4GV): Dawn Bennett, Ruth Brothwell and Catherine Young. Together they secured 5,600 votes and individually they recorded the three highest votes for individual candidates across the Borough.

Both Catherine and Ruth were already borough councillors – Catherine in Clandon & Horsley and Ruth in Worplesdon (although she has now been elected to Clandon and Horsley, where she lives). Dawn is new to the role.

The Parish Council has worked closely with Catherine over the last four years and we are pleased to be able to continue our relationship with such a committed councillor. Following her re-election, Catherine said: "I am absolutely delighted to have been re-elected by the residents of Clandon & Horsley and that they have put their faith in R4GV. I am excited to continue working hard for the people in the Ward and for Guildford."

Our R4GV councillors will be collaborating with the Liberal Democrats, who now control Guildford Borough Council with a majority of two seats. Guildford was previously run by a coalition of Lib Dems and R4GV. It is the first time the Lib Dems have had overall control of the Council since 1995. They will be working for "a greener, fairer and thriving future" for Guildford town and the surrounding villages.

We would like to thank our departing borough councillors, Tim Anderson and Chris Barrass (both of whom represented R4GV). They have given a huge amount of their time to the borough and particularly to Clandon and

Horsley. Being a borough councillor is virtually a full-time job and we thank them both for their tireless efforts on our behalf and wish them well in the future. At the same time, we would like to welcome Catherine, Dawn and Ruth; we look forward to working with you over the next four years and to continue advocating for the wellbeing of East Horsley.

As local councillors the R4GV priorities include:

- **Delivering the Local Plan review to ensure greater protection for the Green Belt**
- **Ensuring that new homes are built in sustainable locations, adopting a brownfield-first approach**
- **Continuing to challenge Surrey County Council to deliver much needed local infrastructure and make our roads safer**



Dawn Bennett, Ruth Brothwell & Catherine Young

Contact details and credits

Parish Clerk and Responsible Financial Officer:

Nick Clemens, East Horsley Parish Council Office, Kingston Avenue, East Horsley KT24 6QT.

07596 862569, parishcouncil@easthorsleypc.org

Editor: Nicola Worsfold, commsco@easthorsleypc.org

Design and Artwork: The Creative Workshop, 01580 212551, www.tcws.co.uk

Photographer: Front page Rex Butcher

Print by: Simply Print Partners, 07768 228079, www.simplyprintpartners.com

The views and opinions expressed do not necessarily reflect those held by EHPC.

Front Cover: Evie Kammargh-Farag & Dana Spencer join village Coronation celebrations

East Horsley just got a bit BIGGER!

IN 2020 we applied to revise the East Horsley parish boundary in the vicinity of Effingham Common, an application approved by the Boundary Commission the following year.

This rectified an anomaly whereby 55 houses in Heath View, Heathway, Berrington Drive and Orchard Close were technically part of Effingham parish. The boundary revision is illustrated in the map.

On local election day, 4 May, this change formally came into effect - and so East Horsley grew a little bit bigger. We wish a warm welcome to all of our (technically) new residents!



East Horsley Parish Council proudly present...

HORSLEY BIG DAY OUT

HORSLEY TOWERS – SUNDAY 2 JULY 2023

YOUR PARISH COUNCIL is delighted to announce the community event of the year, the fabulous Horsley Big Day Out at Horsley Towers on Sunday 2 July from 2pm – 7pm. Entry is completely free for pedestrians and cyclists but if you are planning to drive, please be aware that parking spaces are limited. Save time and money by reserving yours now at easthorsley.info – Horsley Big Day Out. (Blue badge holders park free.)

It's a marvellous occasion for all the family (including dogs if kept on a lead) and we are most grateful to De Vere for letting us use the grounds of Horsley Towers and to our sponsors Wimbledon Carriage, Wills & Smerdon, Silent Pool, Russell & Co and Henshaws.

We are delighted to launch the first-ever Horsley WellFest with suppliers of wellness services and products on hand to advise on how to stay fit both physically and mentally. There's also an Artisan Craft Market if you want to start your Christmas shopping early!

More than a hundred gleaming classic vehicles will be on display competing for the prestigious Wills & Smerdon Trophy.

The actual Rolling Stones proved to be a little too expensive so we bring you the closest alternative, Not The Rolling Stones who will be playing all the classic hits you know and love along with local bands Unfinished Business, The XR3 and Apache Road.

There'll be plenty of attractions to entertain our younger guests in the Kids Park.

As usual there will be plenty to eat and drink with real ale (from the Tillingbourne Brewery), Pimms, wine, G 'n' Ts courtesy of Silent Pool and Mews Gin and a tasty line-up of hot food vendors.

For more information about the day including the option to reserve your car park space in advance, log on to easthorsley.info and click on the link to Horsley Big Day Out.



CLASSIC CARS



KIDS PARK



LIVE MUSIC



FOOD & DRINK

Horsley WellFest

WE ARE VERY excited to host our inaugural WellFest at the Horsley Big Day Out on 2 July.

Come and meet local wellness therapists, personal trainers, osteopaths, acupuncturists, counsellors and many more plus there's plenty of opportunity to buy teas, yoga mats, crystals and wellness jewellery. We also have a WellFest Sanctuary where you can listen to interesting talks on wellbeing, perimenopause self-care, mental health, training before, during & after menopause and many more.

If you would like to exhibit or know more, please contact...

horsleywellfest@gmail.com



WELLFEST+ARTISAN MARKET

Task Group Reports

Here are the latest updates including whom to contact if you have a query.

Finance & Risk Committee

Chair: Nick Clemens

The financial year ended on 31 March and the accounts for the internal audit are now being produced. Expenditure was £184,000 with income of £179,000 - the shortfall of £5,000 came from reserves. This is in line with Finance Committee expectations. Expenditure in 2023 is budgeted to be £173,000. The precept for 2023-24 was held at the 2022-23 figure of £58.07 for a band D property.

Road Safety & Maintenance

Andrew Franklin

Following resurfacing of The Drift, the Group's focus has switched to the dangerous and deteriorating state of Forest Road between the bridge and Effingham Junction. We will keep the pressure on Surrey Highways to address both the road surface and the inadequate drainage opposite the Community Hall. At the other end of Forest Road a new solar-powered vehicle activated sign has been erected near High Park Avenue to curb speeding.

Village Appearance

Aileen Aitcheson

Our new Village Warden, Malcolm Hyatt, who runs his own maintenance business in West Horsley, started work at the beginning of April. Solar powered lights have been installed in Bluebell Car Park. Raised beds round the village have been replanted. A free refill drinking water tap for those who use Kingston Meadow can be found on the wall near the Parish Office. Please note the next Village Litterpick is on **16 September**.

Countryside

Steve Punshon

Within The Forest, alongside The Drift, the planned surface and drainage improvements on two sections of the upper path running parallel to the railway line were successfully completed as planned. Unfortunately, the very wet weather in the spring resulted in ultra muddy conditions across much of the woods. Following the recent resurfacing of The Drift the remaining sections of the post and rail fence will either be removed, repaired or replaced.

The Woodlands Trust has completed the ash dieback felling within Great Ridings Wood, particularly on the south-eastern side. Whilst sadly very extensive in certain areas, it is hoped that regeneration will evolve. We will continue to liaise with The Woodlands Trust regarding any follow-up remedial work, particularly to footpaths.

Communications

Steve Harvey

The team has put together the latest newsletter which you are currently reading. Hope you like it! Work is well advanced for launching the new look Parish Council website which we plan to unveil in the next few weeks.

Events

Stephen Skinner

We all knew it was coming: the first Royal Coronation in 70 years, and when it arrived it was certainly not an anti-climax.

Your Council decided to celebrate in three ways:

1. **Festival of Flags** – shops in the village were supplied with a Union Flag and pole, and once displayed, it appeared every retailer tried to outdo each other with original and colourful window displays.
2. **A Schools Art Exhibition** – The Raleigh and Glenesk enthusiastically engaged with us resulting in a wonderful display of artwork in the windows of Quaich. All children received a Coronation medal and a certificate while the winners were awarded a Coronation mug – something they will remember and hopefully cherish for a long time. Thank you to all involved.
3. The design and creation of four Royal Cypher installations (see pg 7) – produced by Rex Butcher – were on show around the village, and judging by the number of compliments that have been received, it is clear these original and thoughtful salutes to His Majesty were well received.

Horsley Community

Holly Haling

With the summer months here, we usually see a rise in anti-social behaviour (ASB), but it can be difficult to define. Although annoying, there are some types of disorderly conduct that are not classed as anti-social such as:

- Children playing in the street or communal areas - unless they are causing damage to property
- Young people gathering socially - unless they are rowdy, inconsiderate and/or being intimidating
- Being unable to park outside your own home
- If you do need to report ASB there is a very simple and quick link on the Surrey Police website. <https://www.surrey.police.uk/ro/report/asb/asb-v3/report-antisocial-behaviour/> or call 101, the Police non-emergency number

Thank you to our Duke of Edinburgh students who are helping keep Horsley tidy with weekly litterpicks and the many families who have been spotted out and about with their litterpickers at weekends.

Climate Change

Anthony Etwell

So what has been achieved? Four excellent climate change talks, thank you to Alex Veys, Claire Brown, Tom Housden and Ben McCallan. Hopefully, we now all have a growing awareness and a better understanding of the changes to our climate and have learnt some surprisingly easy ways to make a difference, however small. There are many initiatives planned for the future, more talks, more guidance, more workshops, and more research. Please let us know what YOU need to know and we'll help to find the answers.

Stay in touch by: Instagram: thehorsleysCAN or write to our Parish Office on: parishcouncil@easthorsley.org

Railway

Stephen Groom

A recent highlight was our special display stand at the Annual Parish Meeting starring historic photos of Effingham Junction station, plus a chance to give all attendees a quick verbal update. This kick-started our new drive to grow the Effingham Junction and Horsley Station Friends groups.

Interested? Please email the Parish Council Clerk at the address below. Meanwhile Customer Ambassador Richard Bunce tells us that Horsley Station has again been nominated for the 'Small Station of the Year' award and we hope they win it.

Also, key recent site meetings with the South Western Railway Community team will help us move forward on various projects at both stations, so watch this space. And, last but not least, we are keeping a weather eye on our bird boxes to see if more blue tits hatch than last year.

parishcouncil@easthorsley.org



2023 ANNUAL PARISH MEETING

OUR ANNUAL PARISH MEETING (APM) was held on Tuesday 25 April in the East Horsley Village Hall. Each parish councillor summarised their recent activities and outlined ideas for the year ahead. A lively Q&A session followed and continued over drinks. Themes raised included anti-social behaviour in Kingston Meadows and the poor state of our local roads, with Surrey Highways receiving criticism for their slow response to repairing potholes.

Participating guests at the APM included GBC councillor, Catherine Young; Surrey County councillor, Colin Cross; Martin Stringfellow from the Speedwatch team and Stephen Groom from our Railways Task Group.

The Agenda papers, Chairman's Annual Review and Annual Financial Report are all available on our website.



Financial Accounts Summary 2022-23

ALONGSIDE are extracts from our Annual Financial Report for the last financial year:

(a) Income

Total income for the last financial year was £178,968, an increase of 6.1% over the previous 12 months. This income was derived from various sources as set out.

(b) Expenditure

EHPC's total expenditure in the financial year ending 31 March 2023 came to £184,368, an increase of 22% over the previous year, as detailed.

(c) Net Income

With total income of £178,968 and overall expenditure of £184,368, the Parish Council had a net deficit of £5,400 for the financial year ending 31 March 2023. This compares with a budgeted surplus of £463.

(d) Liquidity

As at 31 March 2023 the Parish Council had net liquid assets of £187,772, a decrease of 0.5% compared with the previous year. This degree of liquidity complies with National Association of Local Councils' recommendations for solvency levels of parish councils.

Robert Taylor, Chairman

(a) Parish Council income for the financial years ending 31 March 2022 and 2023

Income Sources	Year ending 31st March 2022		Year ending 31st March 2023	
	£	%	£	%
Precept	143,000	85%	146,000	82%
Grant, etc	11,384	7%	14,168	8%
Bank interest	167	0%	2,071	1%
Income from events & newsletter	14,118	8%	16,729	9%
Total income	168,669	100%	178,968	100%

(b) Parish Council expenditure for the financial years ending 31 March 2022 and 2023

Expenditure types:	Year ending 31st March 2022		Year ending 31st March 2023	
	£	%	£	%
Parish Clerk & Assistant Clerk	43,876	29%	59,236	32%
PC Establishment	24,115	16%	24,379	13%
Village facilities/appearance	25,836	17%	32,868	18%
Communications	18,009	12%	23,998	13%
Village warden	13,467	9%	6,394	3%
Highway, pavements, footpaths	2,831	2%	3,599	2%
Events	19,488	13%	24,401	13%
Donations, grants, etc	3,981	3%	9,492	5%
Total expenditure	151,603	100%	184,368	100%

COMING DOWN THE LINE

THE PROMISED phasing in of brand-new rolling stock for the London to Guildford rail lines will be well underway before the end of the year.

Loo facilities are to be available for the first time and with no dividing doors there will be continuous access between carriages. Better insulation too will mean quieter journeys.



Potholes!

MUCH THE HOTTEST topic in the locality for several months is the degenerated state of the roads. Maintenance rests with Surrey Highways. How they prioritise their budget is their sole preserve. Nevertheless, EHPC continues to lobby them vigorously on your behalf; but we are competing against all the other parishes around the county so inevitably progress on dealing with the numerous and dangerous potholes is not as fast as we would like.



Ada Gardens Q&A

With work now well underway at Ada Gardens, Ockham Road North, we submitted some questions to Taylor Wimpey'

Q. When do you expect the show house to be ready?

A. We have now prepared the site and the building works at Ada Gardens (off Ockham Road North) and have formed the new road entrance. The first foundations have been dug and we are lifting the brickwork for the show homes and sales office, which we anticipate opening to the public in the Autumn. We will also be constructing a new bridge over the watercourse during the next few months. The timescale for completion of the whole development is anticipated to be late in 2025.

Q. The site often floods after heavy rain – how do you propose to deal with excess water on the site?

A. Surface water drainage and flood risk are matters we've given great consideration to as part of the planning approval process. The Lead Local Flood Authority and the Environment Agency reviewed the flood risk assessment and surface water management strategy and had no objection to the development proposals. The sustainable urban drainage systems that will be established on-site are designed to not only safeguard the development from flood risk, but to ensure that flood risk is not exacerbated in the surrounding area.

Q. We have a very active climate change group in the village – what eco-friendly features, if any, will you be incorporating into the houses?

A. New homes are significantly more energy efficient to run than second-hand homes. We've included electric vehicle charging points and solar roof cells (PVs) for each house, as well as triple-glazed windows, to ensure our new residents are living in a sustainable and eco-friendly environment. Our taps are fitted with flow restrictors which produce a consistent and soft flow of water, while reducing consumption and lowering water bills. Our dishwashers and washing machines are all water efficient models. Thermostatic valves on radiators will give householders control of individual room temperatures, helping to save money by allowing the temperature of different areas of the home to be adjusted.

Q. You have named the development Ada Gardens (after Ada Lovelace) but apart from this, how do your designs reflect the architectural heritage of East Horsley?

A. We worked very closely with the local planning authority to achieve a sympathetic aesthetic to the local area, and the external finishes on the new homes will reflect this.

Q. The main site entrance is on Ockham Rd North and already the roads and pavements are getting very dirty from construction traffic, how can you alleviate this issue?

A. Construction can be a disruptive process and we recognise that residents may have concerns about this. We are fully committed to ensuring that we keep disruption and inconvenience to local residents to a minimum.

Road sweepers are now on duty daily to keep the area as clean as possible. During some of the build stages, their duties will be enhanced where necessary.

Q. Apart from providing new houses on the site, what additional benefits are there for residents of East Horsley?

A. As part of our commitment to the local community and our planning obligations we have contributed towards local bus services, education and healthcare providers and policing costs in East Horsley. Further contributions have also been made to the local Sustainable Area of Natural Greenspace (SANG) and Highways and within the development there will also be equipped play areas for our younger residents.

Wisley Airfield: Twists & Turns

New public consultation now open

Another public consultation has opened into Taylor Wimpey's proposals to develop Wisley airfield with nearly 100 new documents recently filed with Guildford Borough Council (GBC).

Changes are relatively limited, although the Transport Position Update runs to over 500 pages. We believe this was prompted by an e-mail we sent to GBC last October claiming Taylor Wimpey had failed to provide adequate disclosure of key traffic model assumptions. Yet despite all the new material, the data we requested is still not provided.

Technically, the new documents represent a planning variation, so the reference number stays the same - 22/P/01175. All previous comments are retained but we would still encourage residents to write in with your updated views.

Our Supplementary Comments on the application are now on our website. GBC's timing to decide this application is still not known.

Hallam Land applies to develop Upton End on Ockham Lane

Developer Hallam Land has now submitted plans to build 70 new homes along Ockham Lane

adjacent to the Taylor Wimpey site.

The GBC planning reference is 23/P/00417. EHPC has submitted a letter of objection, available on our website, citing pre-maturity, catastrophic impact on local character and appearance, severe local traffic impacts and loss of prime agricultural land. If approved, it will mean the northern side of Ockham Lane from the Black Swan to Hatch Lane will become a continuous urban development stretching just over half-a-mile.

Farewell to the Ockham beacon

Pilots all around the world know the Ockham beacon, which has guided air traffic across the south of England for many years. The potential loss of this back-up guidance facility at Wisley airfield meant Gatwick, Heathrow and Farnborough airports, plus the RAF, all filed objections against the proposed Wisley airfield development.

However, the air traffic control body, NATS, has now announced a deal with Taylor Wimpey to de-commission the beacon during 2024 and all the airport objections have been withdrawn. To date there is no word from NATS about any alternative site - it seems non-disclosure is becoming popular.

Speed Limits Chalk Lane

THE MOST ANOMALOUS speed limit in the village is surely to be the one that has applied to Chalk Lane for so long; the narrowest road yet where vehicles are entitled to blitz along it at 60 mph. For years the Road Safety Task Group has pointed out this absurdity to Surrey Highways to no avail – until now.

Our campaign has finally yielded a positive result and Surrey Highways has recently sanctioned the implementation of a 20 mph which may well be in place by the time you read this.

Yes, progress has been slow but from now on, let us hope drivers along Chalk Lane will be equally unhurried.

Elsewhere in the village, the war on excessive speeds was stepped up last month when the Speedwatch team conducted its first survey – in Forest Road – using a new state-of-the-art radar gun funded by your Parish Council.

Horsley honours the Coronation of King Charles and Queen Camilla

RESIDENTS IN East and West Horsley celebrated the coronation on 6 May. Union flags flew above shops in the village and specially designed CRIII signs were erected at Station Parade, Wellington Meadows, Bishopsmead Parade and at Effingham Junction. Children from the Raleigh School demonstrated their creativity with a display of artwork depicting King Charles and Queen Camilla, the Jubilee Beacon was lit at West Horsley Place and street parties were the order of the day around the village. Here we present a montage of images from that wonderful (but slightly damp) weekend.



From the Rectory...

St Martin's Church

You may recall that some time ago I wrote about our plans at St Martin's to have new stained-glass windows as a reminder of the COVID-19 pandemic. After months of consultation, I am very pleased that all the permissions are in place for us to begin a fundraising campaign.

I am convinced that the excellent images below will encourage many more visitors to East Horsley. The designer is Derek Hunt, an experienced stained-glass windows specialist, whose work can be seen in many religious and public buildings throughout the UK. The core aims of St Martin's are to build Faith, Hope and Love and this is captured in Derek's designs by depicting a sense of place and pride which we have in our historic village.

East Horsley Parish Council was the first body to donate. Their very kind gift of £5,200 launched the appeal and will cover the cost of two panes of glass. Thanks to some initial fundraising, we are now able to bring the unit cost down to £2,500 per piece of glass. If the donor is able to claim

Gift Aid, then a contribution of £2000 would be sufficient to cover one of the 27 panes involved in the project.

Any donation, either large or small would be most welcome. These could be in memory of a loved one, by marking special celebrations, or from fundraising events. Whatever the reason and whatever the amount, these gifts will help provide a lasting and stunningly beautiful addition to our much-loved church and attract people to visit our beautiful village.

For more information, or to make a donation, visit www.easthorsleychurch.org.uk **With every blessing.**

Revd Renos Pittarides, Rector of East Horsley

Rector of East Horsley

- 01483 283713
- rector@easthorsleychurch.org.uk
- www.easthorsleychurch.org.uk
- @renosp



Horsley Health...

THIS SUMMER we plan to organise a couple of talks. We hope to have a speaker on Men's Health and another for Parents of Teenagers which will include Mental Health concerns. Further information will be available on our website once dates and speakers are confirmed.

With summer now here we are already thinking about the flu season as we must order the vaccines for all our eligible patients well in advance. We will again be running our Flu Saturday in September and we will notify patients of the date via text and on the website. This has always been very successful with minimal waiting time.

Extended Access is now at Horsley on a Thursday evening when we offer appointments to see a GP or Health Care Assistant between 6pm and 8pm. At present these appointments are not available online and therefore you will need to phone the Practice if you would like one.

If you have not had your blood pressure taken recently come and use the machine in reception. The result will then be looked at by a Health Care Professional and your medical records updated with the information. You will be contacted if the GP wishes to see you regarding the reading.

All the staff would like to thank the patients for all the kind feedback we have received over the last few weeks. The surgery has been very busy and the staff work so hard to provide a good service so it is very much appreciated when we receive such lovely comments. Thank you.

**Caroline Camp, Horsley Medical Centre
Practice Manager
www.horsleydocs.co.uk**

Library Corner...

IF YOU HAVE access to the internet, search for Horsley Library and you'll be amazed at what you can find. For example, Horsley Library's Rhymetime is on every Friday starting at 10:30am when we have nursery rhymes, instruments to play with and percussion music. It is fun, interactive and noisy. All ages are welcome. If you don't have access to a computer, ask one of our staff to help you to get started using our library computer.

Rhys Beynon, Chairman of Friends of Horsley Library (FoHL)
rbeynon1@btinternet.com

Horsley Evangelical Church

WITH SUMMER here, Horsley Evangelical Church would like to warmly invite you to our events and services. Located on Ockham Road North, we are a Bible-believing church with about 80 people from different ages, backgrounds, and nationalities.

On Sundays we meet at 10.45am (including a weekly Sunday school for the children) & 6.30pm for a time of worshipping God through singing, praying, and studying the Bible, led by our Minister Ken McIntosh. We also have Thursday evening Bible study and prayer meetings at 7.30pm in the church, interspersed with monthly home groups. There are regular ladies groups for different ages as well as Ladies' and Men's breakfasts once a month.

Meanwhile there are exciting youth groups for all ages, with Toddler Group on Wednesdays at 10.00am, and Trackers (Reception - Yr2), Quest (Yr3- Yr6) and Searchers (Secondary Age & Above) taking place on a Friday evening at 5.30pm, 6.30pm and 8.00pm respectively. Come along for fun-filled evenings of games, crafts, snacks

and special events alongside looking at what the Bible teaches young people today. We'd love to see you there.

Coming events not to miss:

- **Our annual Family Summer Fair 14 July from 5.30pm - 7.30pm. Packed with games and activities from splat the rat to face painting, prizes, refreshments and a short Christian talk; a much-loved event by all who attend. No sign-up needed, just turn up to enjoy the fun!**
- **Searchers Beach Day Outing at the end of July is the unmissable youth group event of the year!**

Throughout the year we run various activities, craft nights and chocolate evenings... to keep up to date with what is happening follow us on Facebook @horsleyevangelicalchurch or visit horsleyec.org.uk for more details. We look forward to seeing you.

Thomas Faulkner, Youth and Families Minister
[01483283453](tel:01483283453), faulky96@gmail.com

Nomads 25

THE NOMAD THEATRE is an award-winning hidden gem in Bishopsmead. It's a not-for-profit community theatre run by volunteers. Whilst The Nomads have been performing for 89 years, our "new" theatre clocks up its 25th birthday this year. Watch out for information on our celebrations! The theatre is professionally designed with fly tower, trap

doors, revolve and raked seating. Why not support us in the theatre and in the community? If you'd like to get involved on stage or in other ways (Bar, Box Office, Front of House, Backstage, Costumes, Props and more), or if you'd like to be a sponsor then please email us at chairman@nomadtheatre.com. We look forward to welcoming you soon.



Don't Lock Up Your Daughters It's Not The Rolling Stones!

ON 2 JULY, we will present the amazing NOT THE ROLLING STONES at the Horsley Big Day Out, for which the Horsley Live Music Club has been invited to organise the music. With an uncanny lookalike Mick Jagger, the band capture the sound and spirit of 'The Greatest Rock n Roll Band in The World'.

In support, there will be three great local bands, covering a wide range of pop and rock music, from the 60s to the present day: Unfinished Business, The XR3, and Apache Rose.

It's only rock 'n roll, but we guarantee you'll love it!

Mark Beasley, Chairman, Horsley Live Music Club
www.horsleylivemusic.com
livemusic@btinternet.com



GARDEN SOCIETY BLOOMING

THERE HAVE BEEN flower shows, and a Horticultural Society in West Horsley for over 100 years. Now known as the Horsley Garden Society and open to residents of both Horsleys, this thriving and welcoming group has an active programme. There are talks in winter, and practical gardening workshops and garden visits during the rest of the year. Highlights include Spring and Summer Shows. This year's summer event is on Saturday 8 July from 2.00pm - 4.00pm at West Horsley Village Hall.

For more information, contact **Terry Lazenby 01483 284232**.



Entertainment

To have your event or activity listed here, please send details by email to: info@easthorsley.info

The Nomad Theatre:

Bishopsmead, East Horsley, KT24 6RT
 Box Office 01483 284747

www.ticketsource.co.uk/nomadtheatre

A Double Bill Of Comedies:

20 – 24 June at 7.45pm

Snakeskin and Fur

By Anton Chekhov

Written and directed by Phillip Bingham

Honeymoon Suite

by Tony Layton

Translated by Michael Frayn

Directed by Moyra Brookes

The Nomes Present: Alice The Musical

1 – 2 July at 2.30pm

Based on the original story of Alice's Adventures in Wonderland, by Lewis Carroll. Adapted and dramatised by Mark and Helen Johnson and Richard Davis

Play in A Week present: Second on the Left

29 July 7.30pm and Sunday 30 July 2.30pm
 by Josh Sadler

Outside Edge:

12 – 16 September at 7.30pm

Snakeskin and Fur

By Richard Harris

Directed by Jeffrey Wightwick

St Martin's Church Film Clubs

Family Cinema, first Friday in the month
 5pm film with pizza.

Call 01483 282038

Spiritual Cinema, third Sunday in the month
 film with supper.

Call 01483 283713

Horsley Live Music Club

22 June

John Peppard at the Barley Mow

16 September

The Sounds of Simon – tickets on sale soon.

www.horsleylivemusic.com/events.html

The Horsley Business Guide

More details about these businesses can be found on the website at easthorsley.info

Automotive

JR Automotive (Surrey) Ltd
REPAIRS-SERVICING-DIAGNOSTICS
 📍 Ripley Lane, West Horsley, Surrey
 ☎ 01483 281031 or 07584 055504
 ✉ info@jrautomotivesurrey.com
 🌐 www.jrautomotivesurrey.com

Finance & Law

Thomas Rigg Wealth Management Ltd
CHARTERED FINANCIAL PLANNER
 📍 Old Lane, Cobham, KT11 1NP
 ☎ 07824 664254
 ✉ thomas.rigg@sjpp.co.uk
 🌐 www.thomas-rigg.co.uk

Wellers Hedleys Solicitors
LEGAL ADVICE
 📍 6 Bishopsmead Parade, KT24 6SR
 ☎ 01483 284567
 ✉ enquiries@hedleys-solicitors.co.uk
 🌐 www.wellerslawgroup.com/hedleys

Food & Drink

Wine&Something
HIGH QUALITY, AFFORDABLE WINE FROM AROUND THE WORLD
 ☎ 01483 562176
 ✉ hello@wineandsomething.com
 🌐 www.wineandsomething.com

The Bakery Shop
CRAFT BAKERY, LUNCHES & BUFFETS
 📍 21 Station Parade, KT24 6QN
 ☎ 01483 285219
 ✉ grahame@thebakeryshop.co.uk
 🌐 www.thebakeryshop.co.uk

F Conisbee & Son
TRADITIONAL BUTCHERS
 📍 Park Corner & Station Parade, East Horsley
 ☎ 01483 282073 & 01483 283391
 ✉ info@fconisbee.com
 🌐 www.fconisbee.com

Health & Care

Osteopath Charlotte Jopling
MUSCULOSKELETAL HEALTH
 📍 10 Station Parade, KT24 6QR
 ☎ 0208 336 6550
 ✉ info@charlottejopling.co.uk
 🌐 www.charlottejopling.co.uk

Home Counties Carers
LIVE IN & HOME CARE SERVICES
 📍 22A Station Parade, KT24 6QN
 ☎ 01483 224985
 ✉ mkalupka@homecountiescarers.co.uk
 🌐 www.homecountiescarers.co.uk

Horsley Osteopaths
TREATMENTS FOR BACK & NECK PROBLEMS
 📍 8 Bishopsmead Parade, KT24 6RT
 ☎ 01483 284333
 ✉ info@horsleyosteopaths.co.uk
 🌐 www.horsleyosteopaths.co.uk

Mortiboys Dental Spa
GENERAL, COSMETIC & IMPLANTS
 📍 Forest Road, KT24 5HE
 ☎ 01483 281428
 ✉ info@mortiboysdentalspa.com
 🌐 www.mortiboysdentalspa.com

The Private GP Group
FAMILY HEALTHCARE WITH SAME-DAY APPOINTMENTS
 📍 10 Station Parade, KT24 6QN
 ☎ 0208 336 6550
 ✉ reception@theprivategpgroup.co.uk
 🌐 www.theprivategpgroup.co.uk

Chrisanthemum
PERSONAL ASSISTANT SERVICE FOR THE LONG-LIVED
 📍 Wood View, Chalk Lane, East Horsley KT24 6TH
 ☎ 07702 035315
 ✉ hello@chrisanthemum.co.uk
 🌐 www.chrisanthemum.co.uk

House & Garden

Cedar Nursery
PLANTS & OUTDOOR LIVING
 📍 Horsley Road, KT11 3JX
 ☎ 01932 862473
 ✉ sales@landscaping.co.uk
 🌐 www.landscaping.co.uk

Floralscapes Nurseries
GARDEN POTS & PLANT NURSERY
 📍 Ripley Road, GU23 7LT
 ☎ 0208 432 2961
 ✉ contact@floralscapesnurseries.co.uk
 🌐 www.floralscapesnurseries.co.uk

Future Light Design
LIGHTING & LUTRON SPECIALISTS
 📍 The Post House, KT24 6RX
 ☎ 0208 543 4451
 ✉ info@futurelightdesign.co.uk
 🌐 www.futurelightdesign.co.uk

Lovelace & Green
FLORIST
 📍 12a Bishopmead Parade, KT24 6RT
 ☎ 01483 351300
 ✉ flowers@lovelaceandgreen.co.uk
 🌐 www.lovelaceandgreen.co.uk

Property

Curchods East Horsley
ESTATE AGENTS
 📍 12 Bishopsmead Parade, KT24 6RT
 ☎ 01483 281010
 ✉ Kate-Dancey@curchods.com
 🌐 www.curchods.com

Henshaws Estate Agents
RESIDENTIAL SALES & LETTINGS
 📍 2 Station Approach, KT24 6QX
 ☎ 01483 285757
 ✉ graham.clarke@henshaws.net
 🌐 www.henshaws.net

Wills & Smerdon
SALES, LETTINGS & MANAGEMENT
 📍 6 Station Parade, KT24 6QN
 ☎ 01483 284141
 ✉ james@willsandsmerdon.co.uk
 🌐 www.willsandsmerdon.co.uk

Restaurants

Merry House
CHINESE, MALAYSIAN, FISH & CHIPS
 📍 3 Parade Court, KT24 6QR
 ☎ 01483 283790
 🌐 www.merry-house.co.uk

Retail

Maynard's Post Office
POST OFFICE, NEWSAGENT & STATIONERS
 📍 10 Bishopsmead Parade, KT24 6RT
 ☎ 01483 283124
 ✉ maynardsnews@gmail.com

Daisy Maison
BOUTIQUE CLOTHING & GIFTS
CLICK & COLLECT AVAILABLE
 📍 14 Station Parade, KT24 6QN
 ☎ 01483 286749
 ✉ terri.wood@daisy-maison.co.uk
 🌐 www.daisy-maison.co.uk

C F Hall & Co Ltd
ELECTRICAL RETAILER & APPLIANCE SERVICING
 📍 2 Station Approach, KT24 6QX
 ☎ 01483 282945
 ✉ info@cfhall.com

Services

Bandbox Dry Cleaners
DRY CLEANING & LAUNDRY
 📍 17 Station Parade, KT24 6QN
 ☎ 01483 283685
 ✉ bandbox@hotmail.co.uk
 🌐 www.bandboxdrycleaners.com

Headquarters Hair
HAIR SALON
 📍 11 Station Parade, KT24 6QN
 ☎ 01483 284258
 ✉ headquartershair@outlook.com
 🌐 www.headquartershairhorsley.co.uk

Pet Doctors
HORSLEY VETERINARY CLINIC
 📍 Ockham Road South, KT24 6QU
 ☎ 01483 285357
 ✉ easthorsley@petdoctors.co.uk
 🌐 www.petdoctors.co.uk

Sport & Leisure

Core Strength Pilates
 📍 Longhurst Road, East Horsley KT24 6AF
 ☎ 07899 844862
 ✉ karisherman1212@gmail.com
 🌐 www.cspilates.co.uk

The Drift Golf Club
GOLF COURSE & FUNCTION ROOMS
 📍 The Drift, East Horsley, KT24 5HD
 ☎ 01483 284641
 ✉ info@driftgolfclub.com
 🌐 www.driftgolfclub.com

Transport

Silver Arrows
TAXI & CHAUFFEUR SERVICES
 📍 St Martin's Business Centre, KT24 6RX
 ☎ 01483 280050
 ✉ bookings@silver-arrows.co.uk
 🌐 www.silver-arrows.co.uk

Business Flyers

Want your business flyer delivered with the next issue to nearly 2000 homes and businesses in East Horsley? Then contact us for an application form:
parishcouncil@easthorsleyipc.org

If you would like to be included in the EHPC Business Guide, please contact us for further information at...
parishcouncil@easthorsleyipc.org

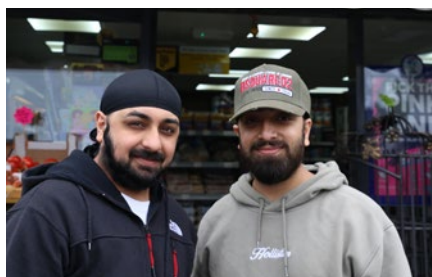
NEW FACES

New team at Effingham Mini Mart

After transforming the Effingham Mini Mart in Forest Rd into a thriving local business, owners Peter Takkar and Manmeet Laghmani have decided to take a well-earned break before starting a fresh business venture in Bookham. The new proprietors of the Mini Mart are Harveen Singh and Ricky Singh who are keen to serve the community in and around Effingham Junction.



Peter Takkar and Manmeet Laghmani



Ricky and Harveen

Welcome to Ponniah and Jeyaluxmi

There are new faces behind the counter at the Post Office in Station Parade, namely Ponniah and Jeyaluxmi Sumathirathevan. Previously living in Surbiton, they have now moved to East Horsley to take over the running of the Convenience Store. We wish them every success.



Ponniah and Jeyaluxmi

Residents Campaign

Due to the recent closure of Budgens, there was concern that the award-winning Cook range of hand-prepared frozen meals would no longer be available in the village. Horsley Village Store is delighted, that following a successful campaign by local residents they now stock Cook meals. This is a great example of what can be achieved by residents working together.

Goodbye Lloyds Bank Hello Sainsbury's

A WHILE BACK East Horsley could boast three banking outlets, HSBC, Barclays and Lloyds. Soon there will be none as the last remaining branch, Lloyds, will be shutting up shop in September. Closure plans include the removal of the cash machine, however we are advised by Lloyds Bank that an ATM will be provided in the village by LINK and further information is awaited.

As one door closes another one opens, with Sainsbury's Local replacing Budgens. It should be open for business by September, if not before. Plans submitted to GBC reveal the main entrance

being moved to a new position on Station Parade with the existing door being blocked off.



Horsley Clubs & Activities

ARTS

Horsley & Clandon Society of Arts

Robyn Cormack Tel: 01483 224063

Horsley Craft Group

Jody Fern Tel: 01483 284437

The Arts Society Horsley

www.theartsocietyhorsley.org.uk

The Arts Society Horsley Lovelace

www.tashl.org

CLUBS

Horsley Live Music Club

www.horsleylivemusic.com

University of the Third Age (U3A)

www.horsleyu3a.org.uk

East Horsley Women's Institute

Helen Taylorson Tel: 01483 283577

West Horsley Women's Institute

Margaret Grinter Tel: 01483 282 294

West Surrey Natural History Society

Tel: 01372 457623

The Probus Club of the Horsleys

David Lush Tel: 01483 280267

Rotary Club of Bookham & Horsley

Mark Secker Tel: 01372 458733

Horsley Countryside Preservation

www.hcps.online

East Horsley Bridge Club

www.bridgewebs.com/easthorsley

Horsley Floral Decoration Group

Ruth Farmer Tel: 01483 202440

Dementia Music Therapy

Ingrid Clift Tel: 01483 964638

Curiosity Club

Jane Halliwell Tel: 07780 676598

Horsley Garden Society

Terry Lazenby Tel: 01483 284232

Beehive Craft Group

www.easthorsleychurch.org.uk

Wheel of Care Social & Exercise Clubs

www.westhorsleywheelofcare.co.uk

DRAMATICS & CHORAL

The Nomad Theatre

www.nomadtheatre.com

The Whips Players

www.horsleyamdram.org

Horsley Choral Society

www.horsleychoralsociety.com

SPORTS & ACTIVITIES

Sports facilities & Skatepark

Kingston Meadow, Kingston Avenue

The Horsley Shufflers – running group

www.facebook.com/HorsleyShufflers

Horsley Football Club, West Horsley

www.horsleyfc.co.uk

West Horsley Community Club Snooker & Pool

Robert Elliott Tel: 07702 922217

Horsley Tennis Club

www.horsleysportsclub.com

Horsley Badminton Club

www.howardbadminton.club

Horsley Cricket Club

www.horsleysportsclub.com

Horsley and Send Cricket Club

www.horsleyandsendcc.co.uk

Groveside Badminton Club

Chris Spratt Tel: 07818 594854

YOUTH

Beavers, Cubs, Scouts & Explorer Scouts

www.firsthorsley.co.uk

4th Horsley Brownies

Email: horsleybrownies@yahoo.co.uk

1st West Horsley Brownies

Email: westhorsleybrownies@gmail.com

1st Horsley Guides

Karlene Peach Tel: 01483 224692

East Horsley Parish News

Planning and Environment Committee Dates

The Planning and Environment Committee meets every fortnight in the Parish Meeting Room at the Village Hall, usually on a Monday. Applications to be considered are posted on the noticeboards and website in the preceding week. Residents are invited to speak for or against any planning applications. Please contact the Parish Clerk for details.

- June 26
- July 10 & 24
- August 7 & 21
- September 4 & 18

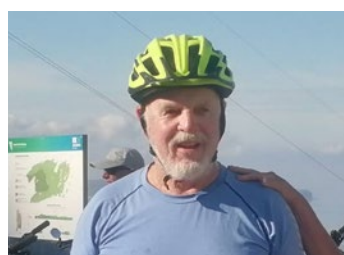
Council Meetings

Council meetings are held in East Horsley Village Hall in The Club Room, starting at 7.30pm. Residents are invited to attend the meetings and address councillors about parish matters during Public Question Time. The next scheduled dates are:

- July 17
- September 11

New Chairman for U3A

The Horsley U3A (University of the Third Age) has recently welcomed Paul Dodgson (below) as its new chair. A local resident for over 35 years, whose three children went to school at the Raleigh and the Howard, Paul has been a U3A member since retiring as a judge in 2019. He takes over his role at a time of growth, with numbers on the up and an ever-widening range of activities on offer. The branch now has over 600 members taking part across 60 groups. New recruits are always welcome; the only qualification is that you are no longer in full time work and want to have fun! For more info visit: www.horsleyu3a.org.uk



Village Litterpick

Our Spring Litterpick was held on Saturday 18 March. We had a good overall turnout of 38 volunteers, with a big increase at Effingham Junction, and as always the support of the Horsley Shufflers. The Parish Council would like to thank everyone who joined this litterpick and we very much hope to see you and other residents for our Autumn Litterpick on 16 September.



New website launching soon

If you think our existing Parish Council website, easthorsley.info, is looking a little tired and dated – we agree! The Communications task group has been working closely with website designers TCWS to develop a new fresh-looking website.

We have taken into account the feedback we received from our survey of residents back in January and will ensure that we include all the most popular requests. The new easthorsley.info launches in July so watch this space.

Correction

In the spring newsletter we stated that most of Ockham Road North and South would be closed for the Surrey Hills Classic cycle event on 13 May. This was not the case, and we apologise for any confusion.

New Parish Councillor – Juliet Robinson

Juliet worked in IT in the City for over 20 years, then paused her career when she and her family moved to Surrey. Juliet and her husband have now been living in East Horsley for five years and their children attend Howard of Effingham School.

Since March 2022, Juliet has been volunteering at Thatcher's Hotel, which is home to displaced families from over 20 countries. She liaises closely with schools and various charities to provide wide-ranging support for children and adults.

She is passionate about improving road safety and reducing car usage for short journeys by increasing active travel with new and enhanced routes for walking and cycling. As a member of the Woodland Trust, she is also motivated to protect and improve access to local green spaces.



She has concerns about the potential impact of large housing developments on local infrastructure. She believes that while new homes may be necessary, they must bring benefits without compromising the character and amenities of the village.

USEFUL TELEPHONE NUMBERS AND WEBSITES

Neighbourhood

Policing team

Tel: 101
guildford@surrey.police.uk

GBC Refuse Collection

Tel: 01483 50 50 50
www.guildford.gov.uk

Slyfield Recycling Centre

Tel: 01483 532187

Guildford Borough Council

www.guildford.gov.uk/
Emergencies

Water Leaks

Tel: 0345 357 2407
www.affinitywater.co.uk

Gas Leaks

Tel: 0800 11 19 99

Electricity Power Cuts

Tel: 0800 31 63 105 or 105 (Mobile)
www.ukpowernet.co.uk

Flooding & Waterways

www.gov.uk

Floodline

Tel: 0345 988 1188

Environment incident hotline

Tel: 0800 80 70 60
www.gov.uk

Surrey County Council

www.surreycc.gov.uk/
do-it-online/

SCC Highways Roads & Transport

www.surreycc.gov.uk/roads-and-transport



Nick Clemens
Parish Clerk
parishcouncil@easthorsley.pc.org



Kevin Jenkins
Assistant Parish Clerk
parishcouncil@easthorsley.pc.org

The Parish Council



Robert Taylor
Chairman



Aileen Aitcheson
Vice Chair



Stephen Skinner



Andrew Franklin



Steve Punshon



Juliet Robinson



Colin Carmichael



Steve Harvey



Holly Haling